



OPERATION INSTRUCTION

Wet vacuum cleaner

W70

**READ ALL INSTRUCTIONS BEFORE
USING**

Introduction

Dear Customer.

We thank you for choosing Ermator as your supplier.

We hope that the Wet vacuum cleaner from Ermator will be to your satisfaction and meet your expectations.

Ermator have been a manufacturer of professional dust extractors since 1967 and has over the years acquired a genuine technical knowledge in this area. We are working hard with improvement in our product segment and will continue to provide the market with new equipment.

Notice!

This instruction does only cover the wet vac type Ermator W70.

The wet vacuum cleaner Ermator W70 are developed for cleaning of construction area, water cooled drilling machines etc.

If the wet vac is used for other applications or been used in other ways then explained in this instruction book, Ermator will not take any responsibility.

Before starting to use the machine, please read carefully the safety regulations.

Read the complete instruction book before start using the Ermator W70.

All spare part used for the Ermator W70 must be recognized by Ermator AB.

Unpacking

When unpacking the machine, please check that the following accessories are included:

- The hose with end fittings.
- Steel tube.
- Floor nozzle.
- Crevice tool.

If some of above mention parts are missing, please contact your local distributor or our sales representative.

Safety instructions

Handling

Warning

- Cables damaged through crunching or cracking can be dangerous if used and should be replaced immediately. Risk of personal injury.

Warning

- Do not connect the machine to an unearthed socket. Risk of personal injury.

Warning

- Make sure the assembly area is firm, so the Dust Extractor dose not tip over. Risk of personal and material injury.

Warning

- Risk for pinch injuries when handling the toggle fastener.

Warning

- Do not vacuum hot or smouldering particles, as the machine can catch fire. If a fire should break out, pull out the plug from the socket and extinguish using the available fire-fighting equipment.

Warning

- The machine must not be use in environments where explosive gases can occur. Large risk for explosions.

Warning

- Do not look into the suction pipe or suction hose if blocked. Large risk of injury to the eyes.

Warning

- Do not point the suction hose towards body parts when the machine is running. Avoid placing your hand or other parts of the body against the suction inlet if the suction hose is not fitted. Risk of personal injury.

Warning

- Check, when lifting the machine, that the dust container is empty and that no one is standing under the lifted machine. Risk for personal injury and material damage

Service

Warning

- Remove the plug from the wall socket when carrying out maintenance work. Risk of personal injury. Replace all guards over the motor and fan components once servicing is complete.

Warning

- Health impairing dust can be spread during filter and bags replacement. Accordingly, the user should wear protective glasses, protective gloves, and a breathing mask conforming to protection class FFP3.

Function

The motor is started by the switch. Dust laden air is then sucked through the inlet valve at high speed via the suction hose. The air is slowed down by the cyclone and coarse dust particles are separated out, partly by centrifugal force and partly by gravity. Air and finer particles then pass through the fine filter where separation is made.

Use

Before using must the user be educated in handling the vacuum cleaner and the dust.

WARNING

Connect the electric plug to a power outlet with the correct voltage, see the nameplate.

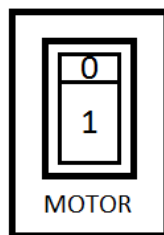
From time to time the filter must be cleaned or replaced. It's appropriate when the work is completed or when there is poor suction.

Connect proper evacuation hose. Fix the free end of the hose.

Switch position:

0: motor off

1: motor on



Fit the suction h

on apparatus

There is a hose intake the tank. Lift the hose lock and insert the suction hose's metal adapter into the intake. Lower the hose lock into the recess of the adapter. The hose lock fixes the adapter in the hose intake and is lifted when the suction hose is to be removed.

Fit the nozzle on the hand pipe

The floor nozzle has adjustable wheels. Adjust the wheel setting so as to achieve the best suction effect. Adjust the wheels with the knob which is located on the rear side of the nozzle. The wheels and rubber strips of the nozzle are replaceable. Ensure that the nozzle is kept in good condition.

After use

Switch off the suction apparatus with the switch. Remove the plug on the electrical cable from the electrical outlet. Do not pull the electrical cable!

Empty and clean the suction apparatus and the accessories used. If necessary, the tank and accessories can be flushed clean.

Never leave water or wet dirt in the suction apparatus. This can cause bad smells and poor hygiene.

Filter change

Risk of dust dispersion - Use of personal safety equipment

Unhealthy dust can be spread during filter change. Accordingly, the user should wear protective glasses, protective gloves, and a breathing mask conforming to protection class FFP3.

1. Remove the plug from the electric outlet.
2. Lift off the filter holder with the filter.
3. Loosen the fingernut and remove the filter cap and filter.
4. Check the sealing on the filter holder.
5. Assemble the new filter.
6. Clean all other parts.

WARNING

Switch off the machine and pull the plug out of the socket.

Service

WARNING

Before cleaning and servicing the machine, you must switch the machine off and pull out the plug from the outlet.

- Avoid cleaning with high pressure cleaner. If necessary do not point at the openings on the machine, especially the opening for the cooling air.
- Before moving the machine from the working area, the machine must be cleaned. Furthermore must the inlet be locked with the expanding plug attached.
- All other equipment must be regarded contaminated and be treated thereafter.
- If possible use a special suitable room.
- Proper personal protective equipment must be used.
- All parts after service, which are contaminated, must be taken care of in a proper way in plastic bags according to all regulations.
- If the vacuum cleaner has to be used for other purposes, it is extremely important that the vacuum cleaner will be cleaned, to avoid spreading of hazardous dust.

Accessories

Following is parts that should be changed on a regular basis:

Part.no.	Description	No/machine
1337019	400-2C C-filter	1 pc

Spare parts, see enclosed spare parts list.

Warranty

All Pullman suction devices and accessories have a 12-month factory warranty for material and manufacturing defects. You can extend the warranty to 36 months by returning the attached warranty slip. Do not attempt to repair the suction apparatus without the consent of the manufacturer. The warranty does not cover defects which are the result of normal wear and tear, negligence, defective use, unauthorised repair or the suction apparatus being connected to the incorrect voltage.

In the event of any complaint, the suction apparatus or an agreed part of it must be returned to us or our authorised representative for warranty examination and for any warranty repair or replacement.

Problem solving

The W70 and are manufactured for severe environments and tasks, but the user must notice that the machine contents of components which must be protected from hits and blows. Filter sealings connections are carefully chosen to serve the operator. Therefore must the machine be treated with knowledge as to work correctly for many years.

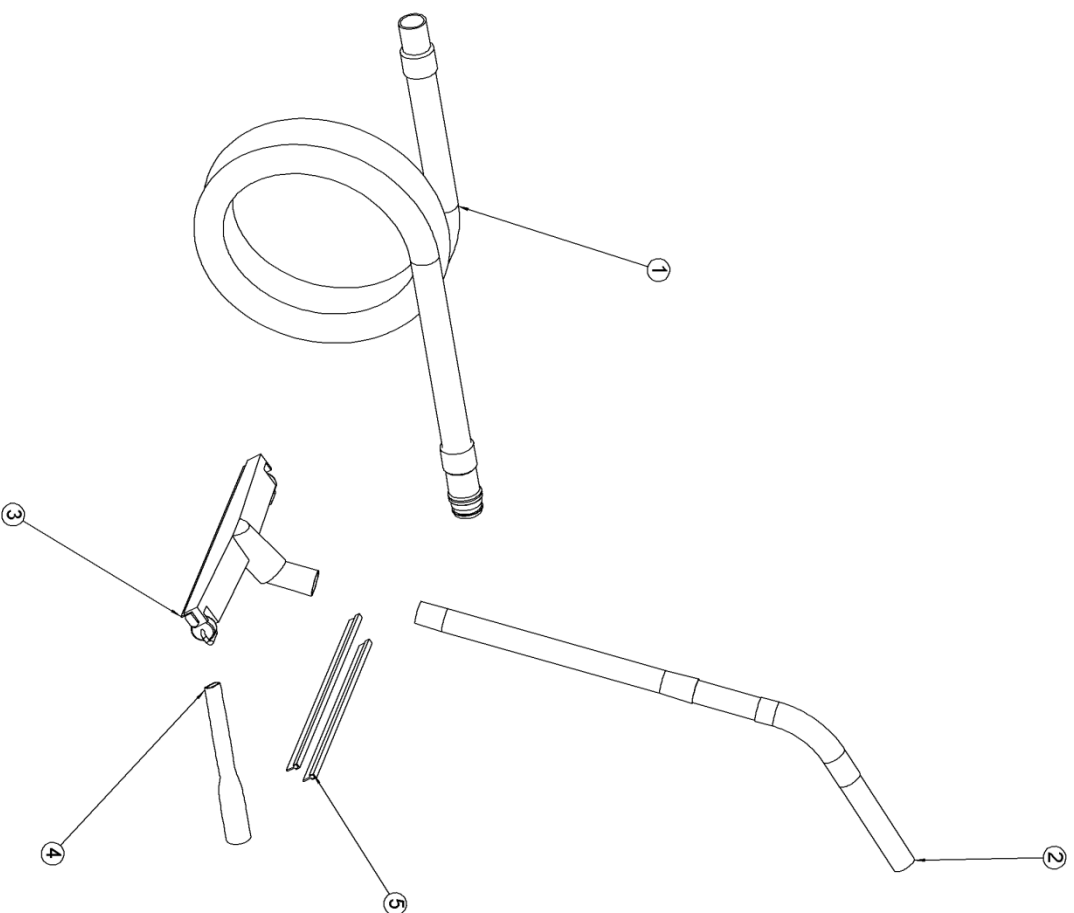
Problem	Cause	Procedure
Motor don't start	No current Defect cable Defect switch	Connect the machine Change Change
Motor stops immediately	Wrong fuse	Connect to proper fuse
Motor runs, but no suction	Hose not connected Hose blocked	Connect the hose Clean the hose
Motor runs, but poor suction	Hole on the hose Blocked filter Suction unit loose Dirt in the hose or intake Defect sealings	Change hose Change filter Adjust Clean the hose and intake Change current sealing
Dust is blowing from motor	Defect or loose filter	Adjust or change
Abnormal noise		Order service

SAVE THESE INSTRUCTIONS!

TECHNICAL DATA

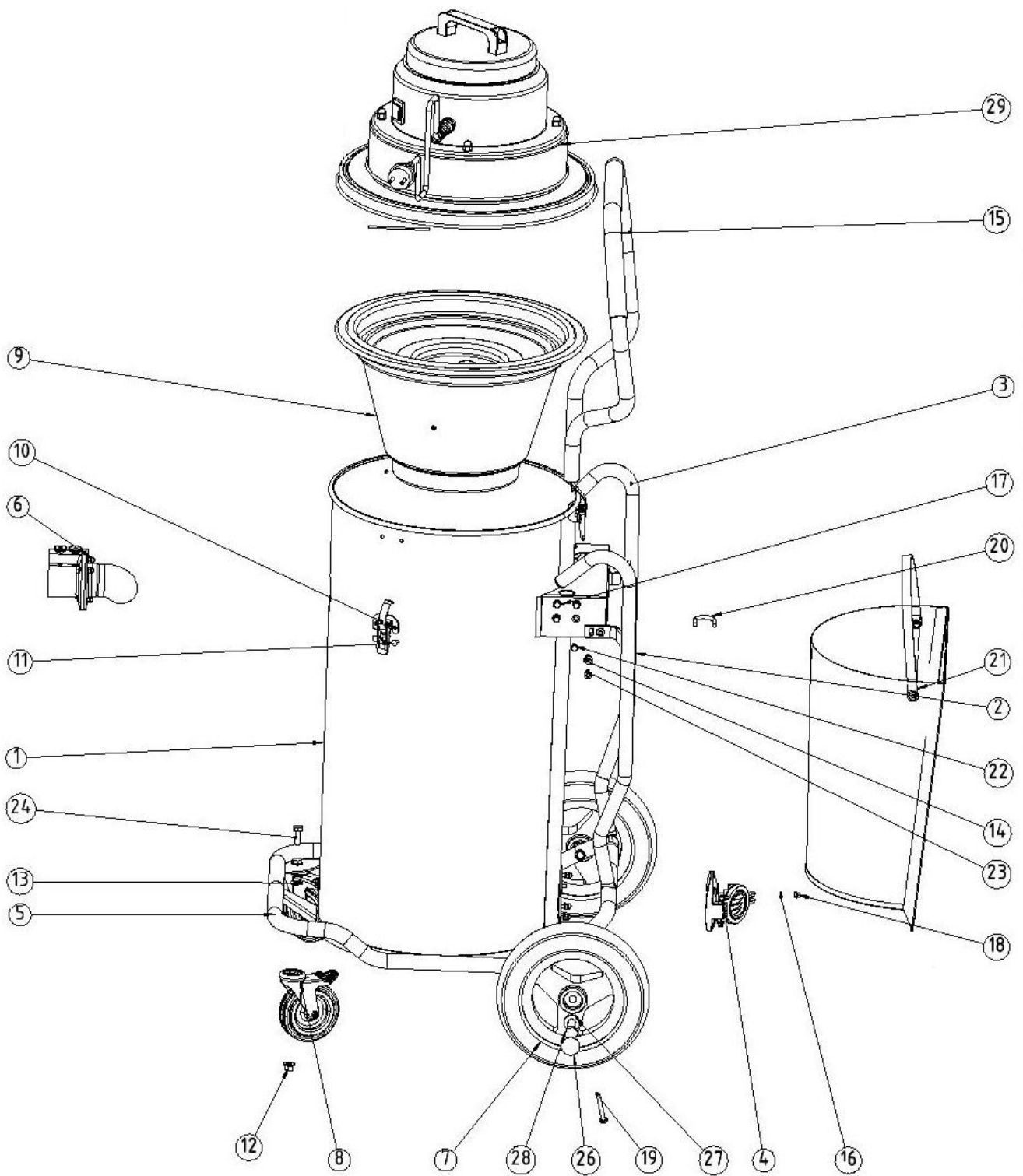
W70	
VOLTAGE	230 Vac, 1-phase
POWER	1300 W
MAX AIRFLOW	200 m ³ /h
MAX VACUUM	22 kPa
HOSE	Ø 38-50mm
INLET	Ø 50mm
MAIN FILTER	Filter surface 0.6m ² 99.5%
SOUND LEVEL	75 dB(A)
DUST COLLECTION SYSTEM	55 l disp. bag (580x780mm)
DIMENSION LxWxH	600x570x1250mm
WEIGHT	28 kg

ACCESSORIES W70



POS.	QTY	NUMBER	BENÄMNING	DESCRIPTION
1	1	1225076	SUGSLANG 51 mm x 3 m, SVART	SUCTION HOSE 51 mm x 3 m, BLACK
2	1	6324034	HANDRÖRSSATS, SVART	STEEL TUBE KIT, BLACK
3	1	1326086	GOLVMUNSTYCKE 38 mm x 450 mm	FLOOR TOOL 38 mm x 450 mm
4	1	1226035	FOGMUNSTYCKE GUMMISTRIPS (L=400/445 mm)	CREVICE TOOL RUBBER BLADES (L=400/445 mm)
5	1	1340004		

W70



29	1	1204025	SUCTION UNIT
28	2	200900118	M6SM12x80
27	2	200900164	Washer of big wheel
26	2	200700067	COVER
25	1	201000529	SEALING
24	2	10461	M6SM8x25
23	8	200700180	MK6S 4,6 M6x20 BLACK
22	8	1360087	DOME NUT M6
21	1	201000036	GK70
20	4	200700163	U-BOLT M6 C-C 32
19	2	200700506	SCREW
18	4	1360051	DOME NUT M5 A2
17	8	1360089	NYLONBRICKA 6.4x12x1.5
16	8	1360148	NYLON WASHER 5,3x10x1
15	1	200600544a	HANDLE
14	4	8359002	Rivet nut
13	4	10463	SRB9 WASHER (DIA 9x18x1.5)
12	2	10462	M8 LOCK NUT
11	6	1359015	AD 66 RIVET (4.8x9,5)
10	3	1341004	HOLDER
9	1	1220005	400 COMBINED FILTER
8	2	200700282	SWIWEL WHEEL
7	2	200700020	WHEEL R250-50-2-ESK
6	1	1344002	C07P TANK INLET
5	1	201000010	Wagon W70
4	1	201000155	Exit Cover
3	1	200700203	PROTECTION RIGHT
2	1	200700203a	PROTECTION LEFT
1	1	201000298	Tank Assembly ex.W70
ITEM NO.	Qty.	PART NUMBER	DESCRIPTION



Ermator

